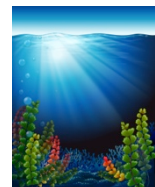
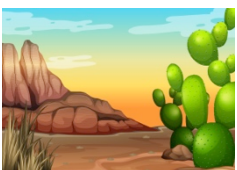


Plant & Animal Communities

- 1) _____: study of relationships between organisms and their environments
- 2) _____: living together in the same area.
- 3) _____: a set of organisms living together in an area.
- 4) Organisms _____ on each other for survival.
- 5) The three relationships/ interactions scientists study in communities are:

Directions: Match the animal to its habitat.



Plant & Animal Communities

- 1) **Ecology**: study of relationships between organisms and their environments
- 2) **Coexisting**: living together in the same area.
- 3) **Community**: a set of organisms living together in an area.
- 4) Organisms **rely** on each other for survival.
- 5) The three relationships/ interactions scientists study in communities are:

Animal-Plant

Animal-Animal

Plant-Plant

Directions: Match the animal to its habitat.

